

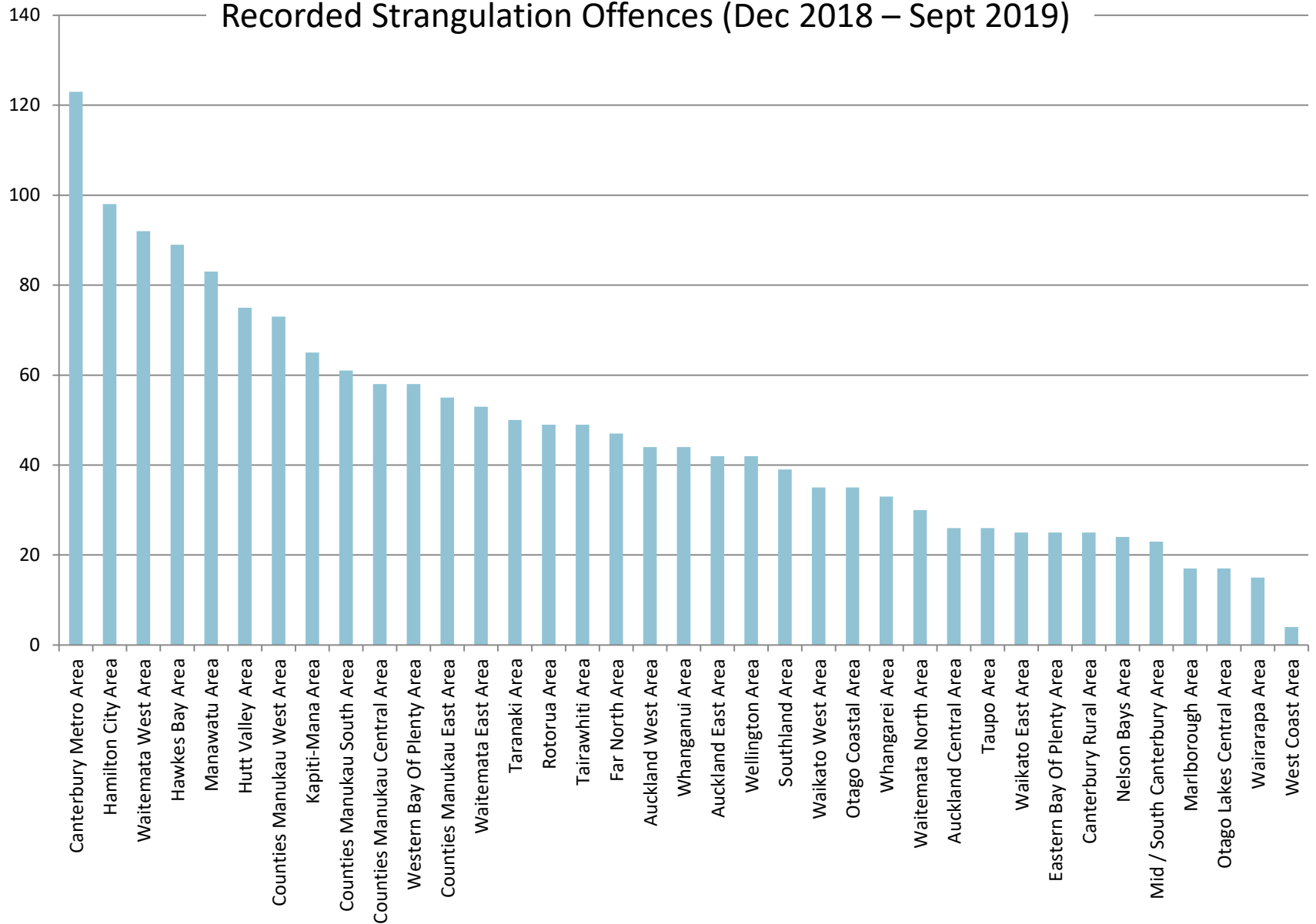


Following slides show actual numbers and comparisons between Police Areas for new offences introduced in December 2018:

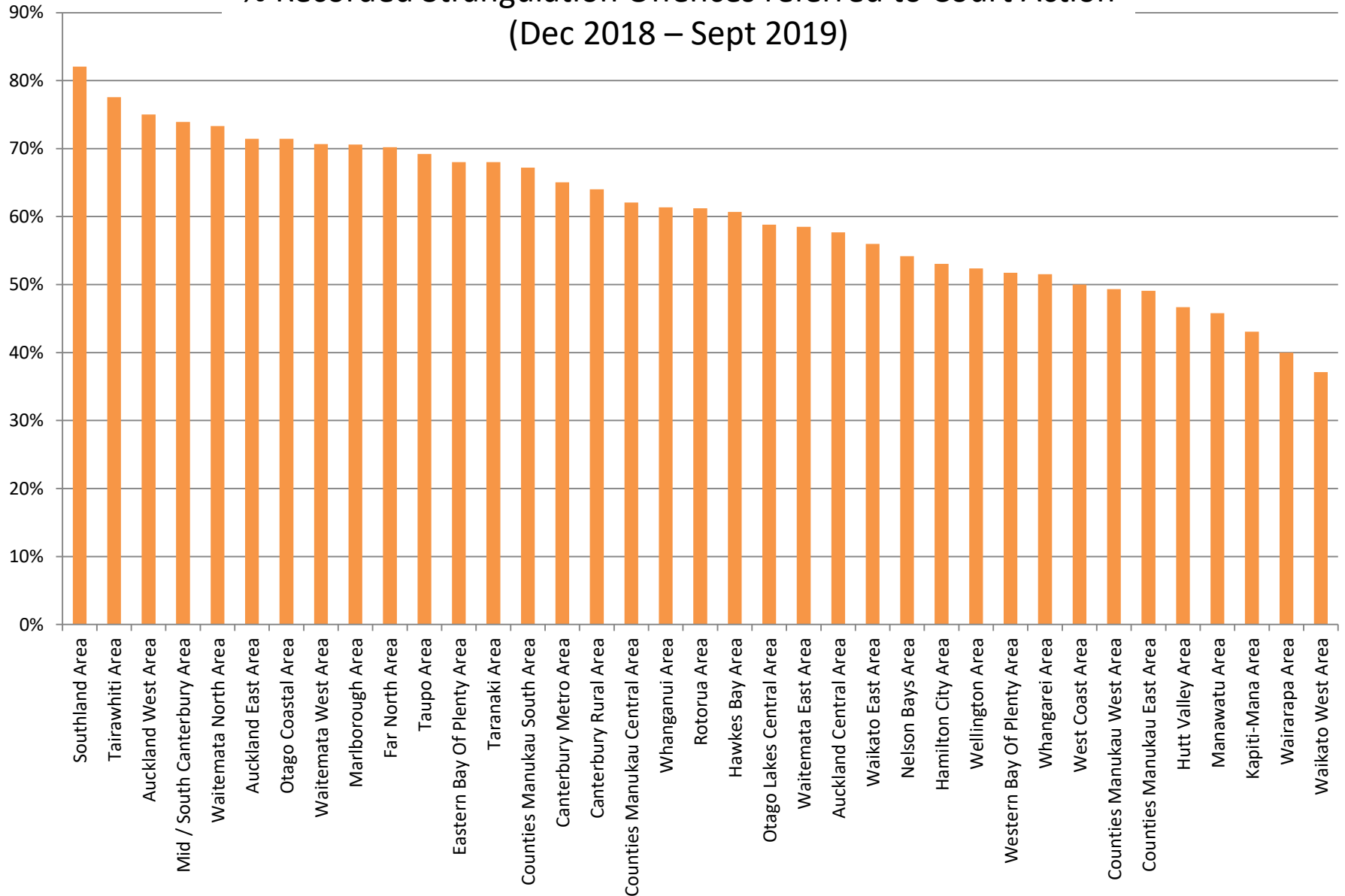
- Strangulation
- Assaults on Person in Family Relationship

Note: Caveats re interpreting data are found on the last slide.

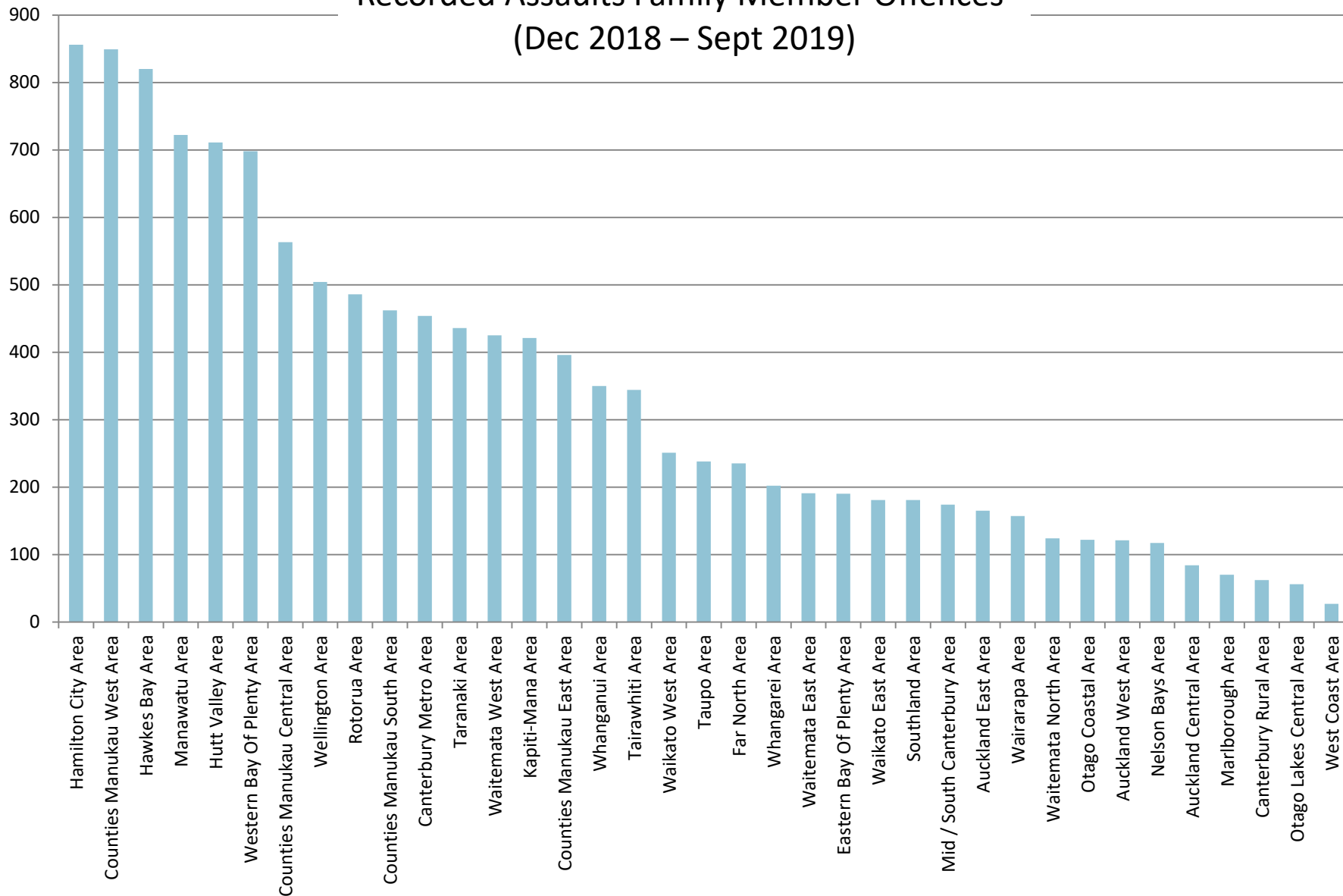
Recorded Strangulation Offences (Dec 2018 – Sept 2019)



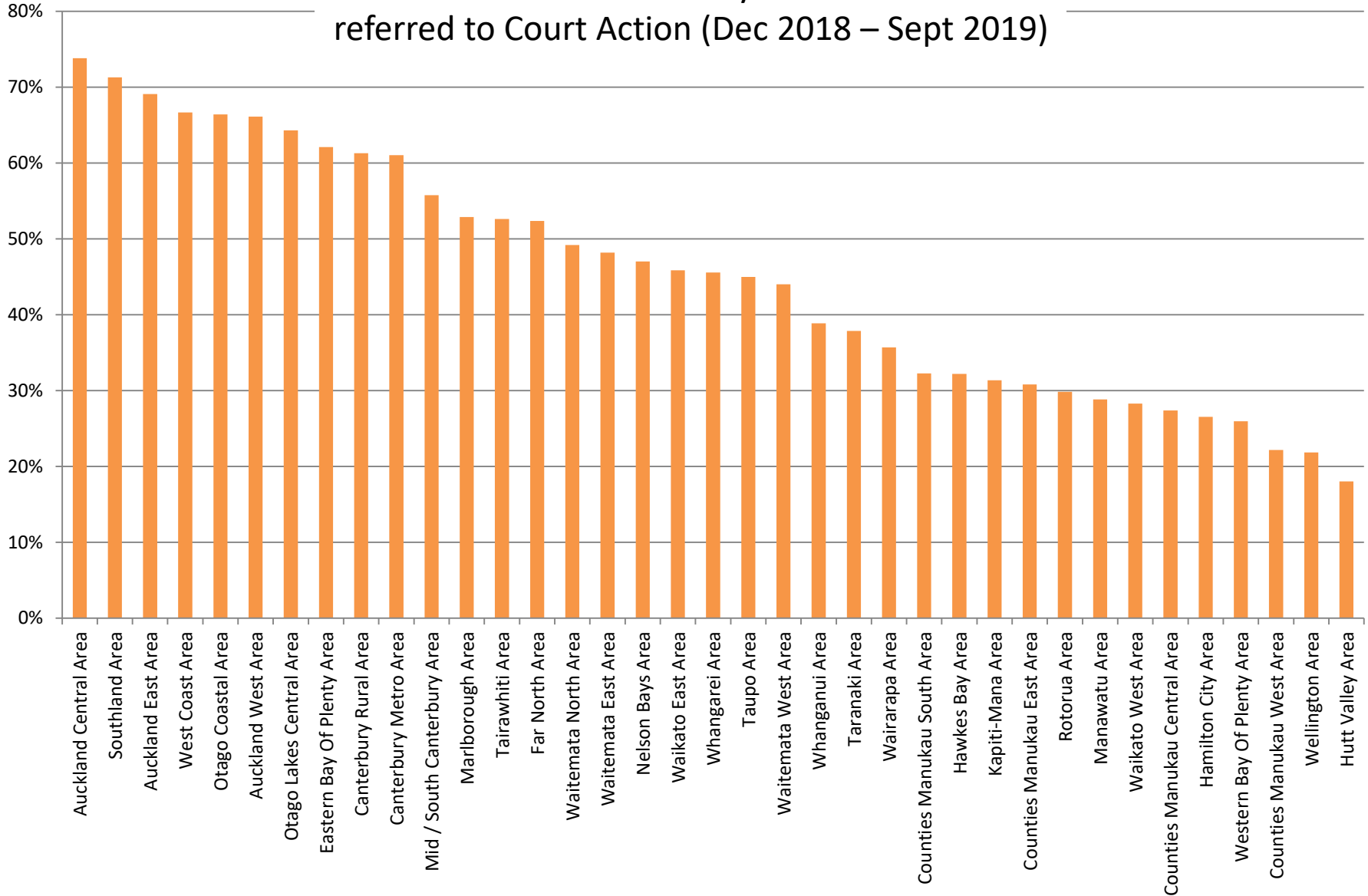
% Recorded Strangulation Offences referred to Court Action (Dec 2018 – Sept 2019)



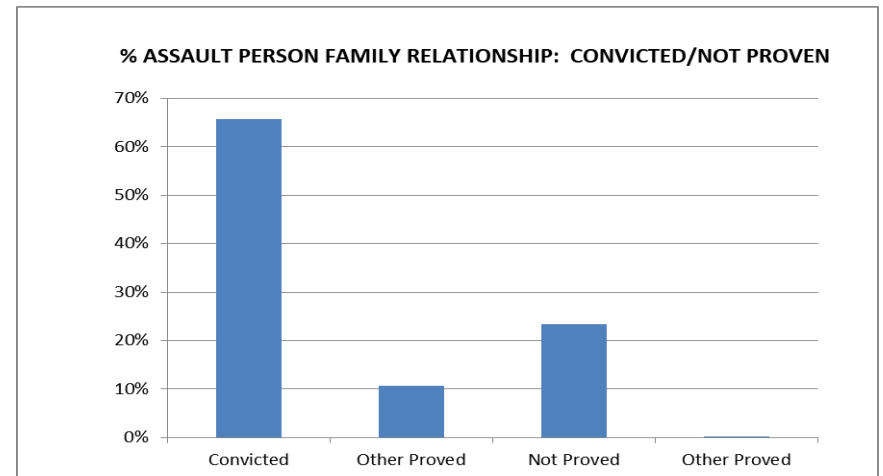
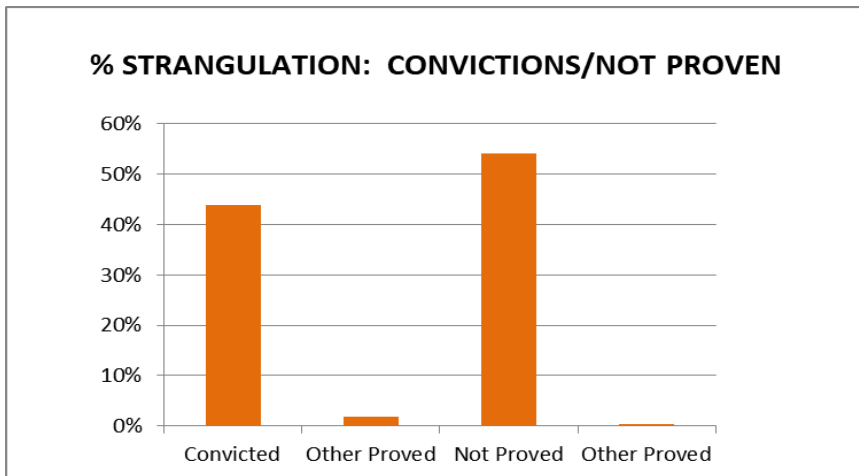
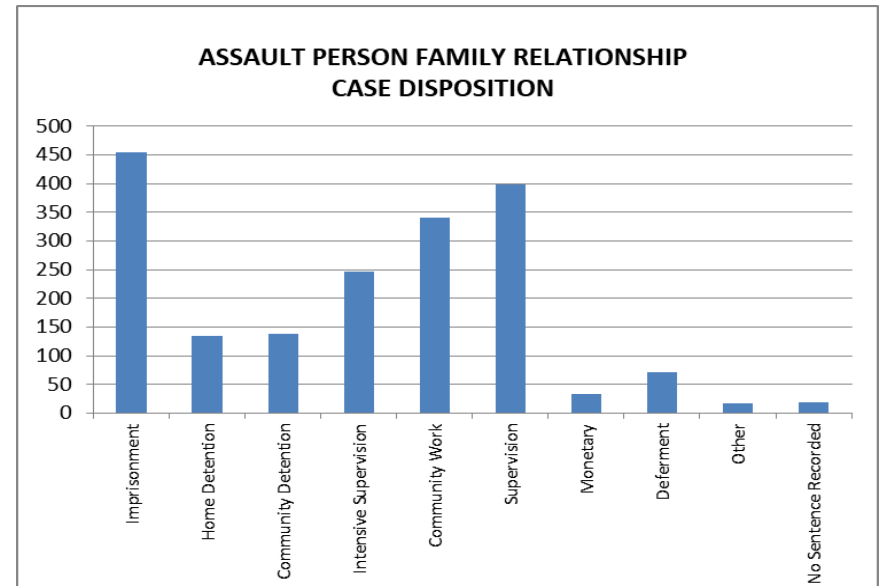
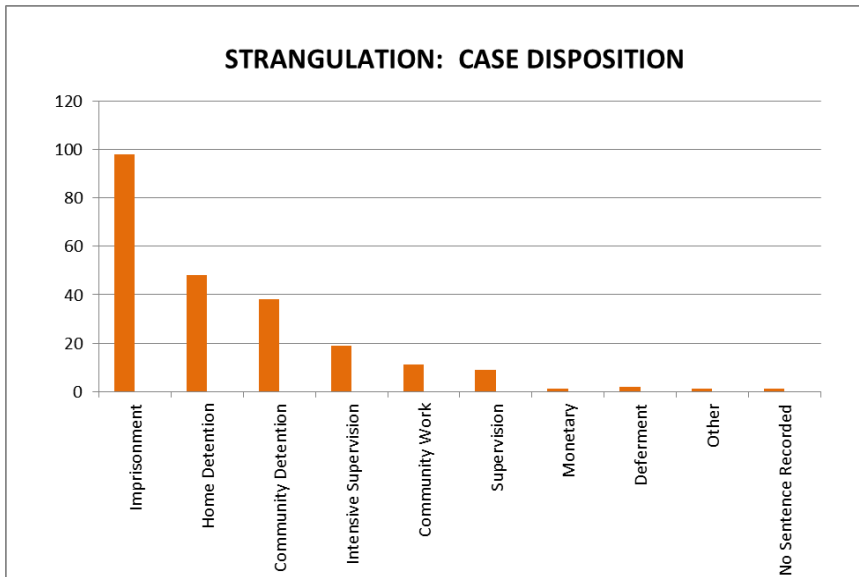
Recorded Assaults Family Member Offences (Dec 2018 – Sept 2019)



% Recorded Assaults Family Member Offences referred to Court Action (Dec 2018 – Sept 2019)



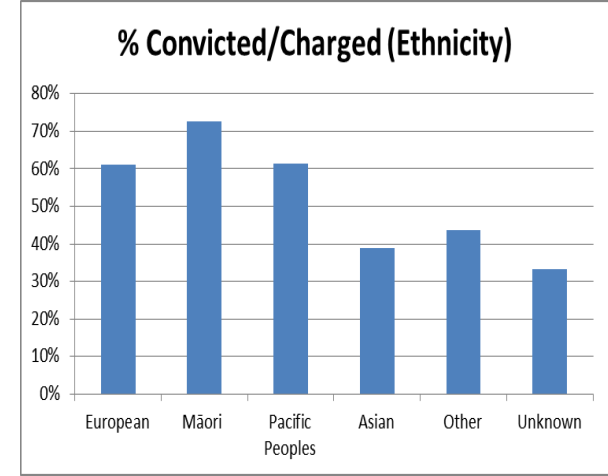
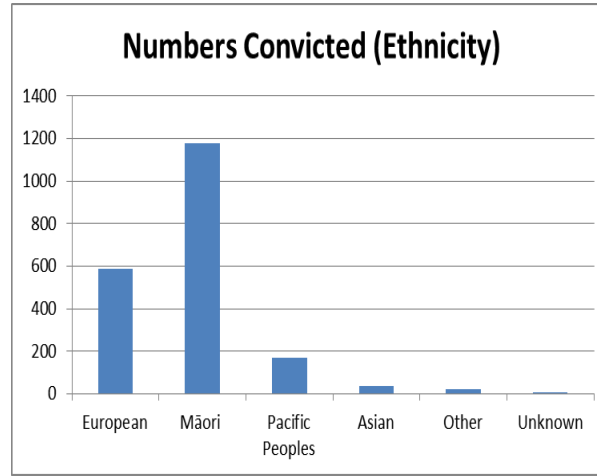
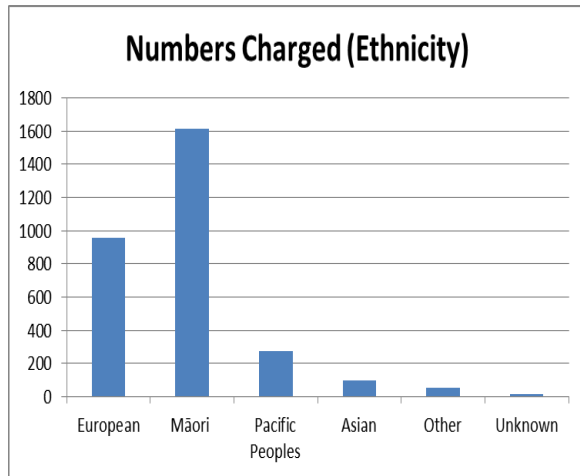
National Offence Data: Overview



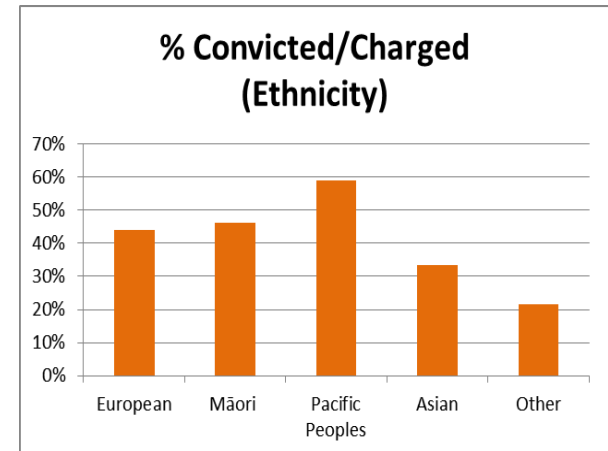
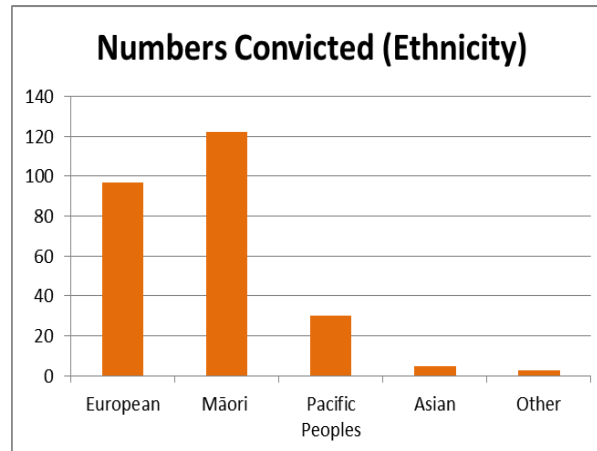
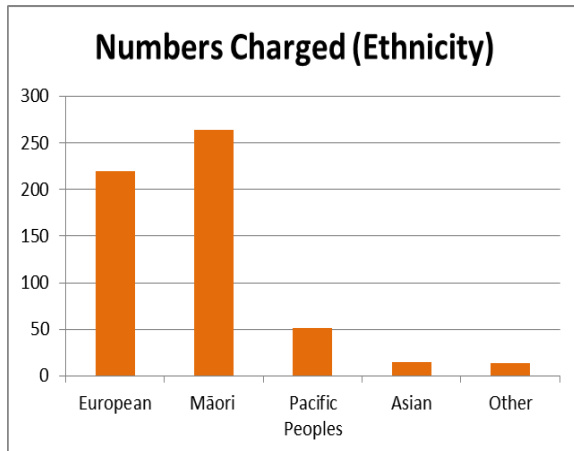
Data to 31 December 2019 drawn from Department for Courts www.justice.govt.nz/justice-sector-policy/research-data/justice-statistics/data-tables/#services

National Offence Data: Ethnicity

Assault on Person In Family Relationship



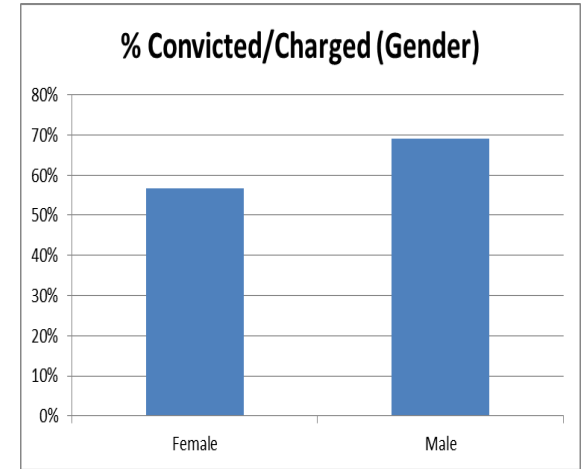
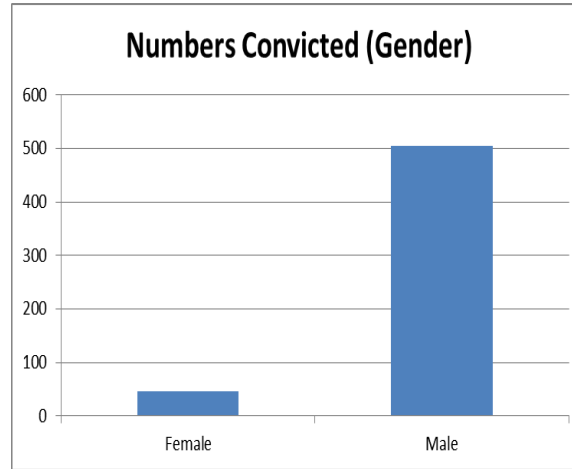
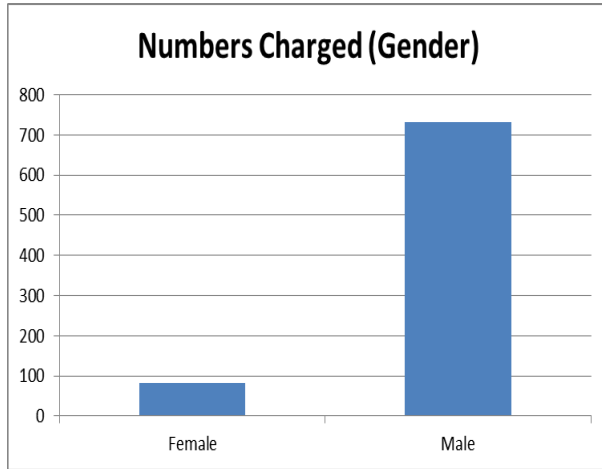
Strangulation



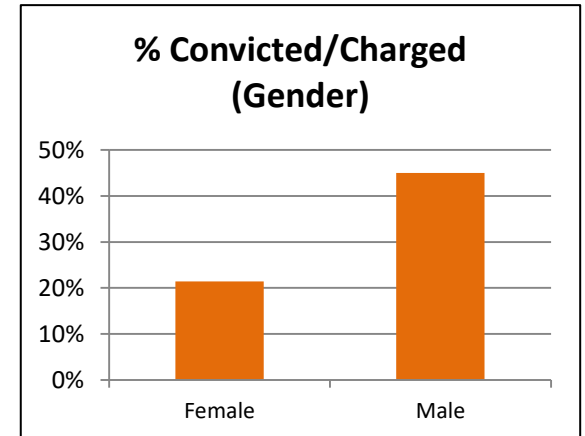
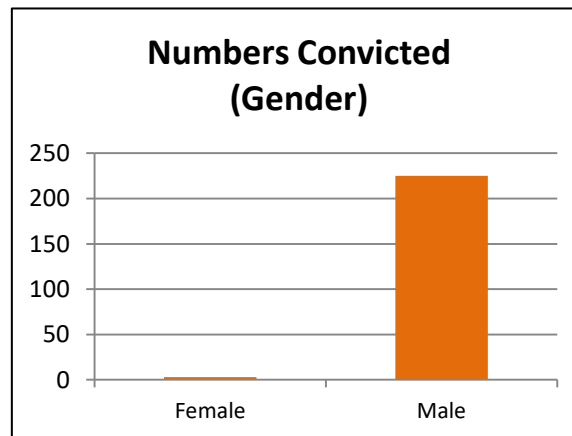
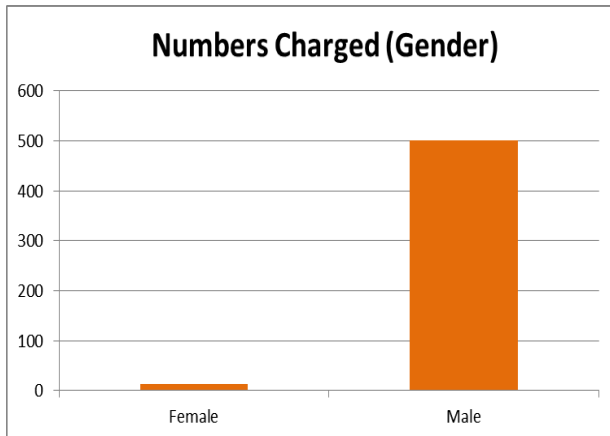
Data to 31 December 2019 drawn from Department for Courts www.justice.govt.nz/justice-sector-policy/research-data/justice-statistics/data-tables/#services

National Offence Data: Gender

Assault on Person In Family Relationship



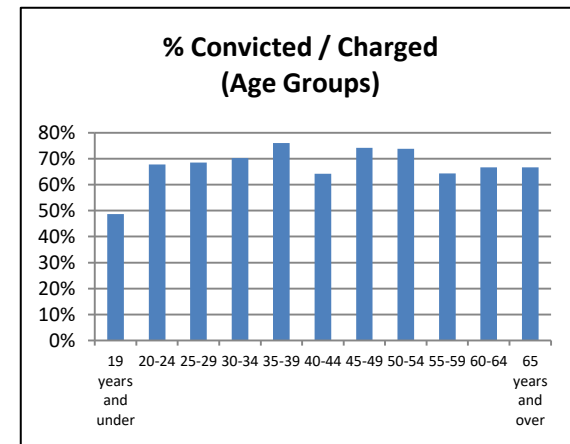
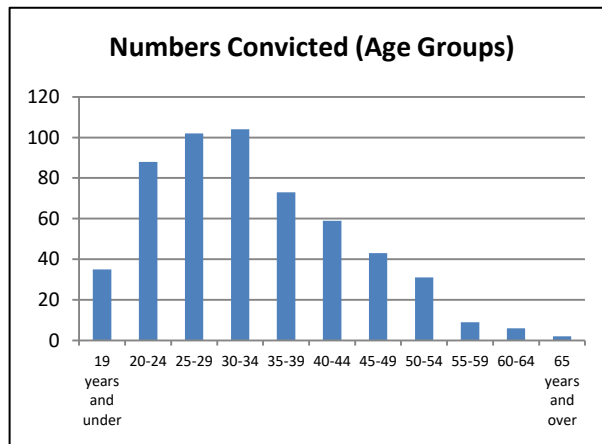
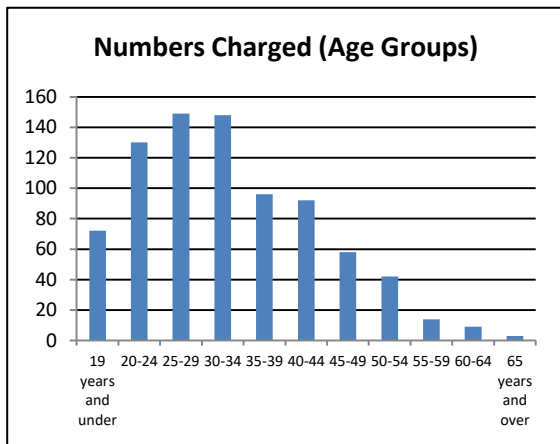
Strangulation



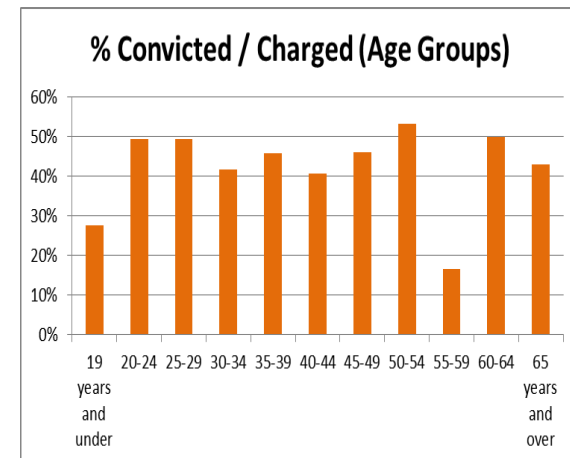
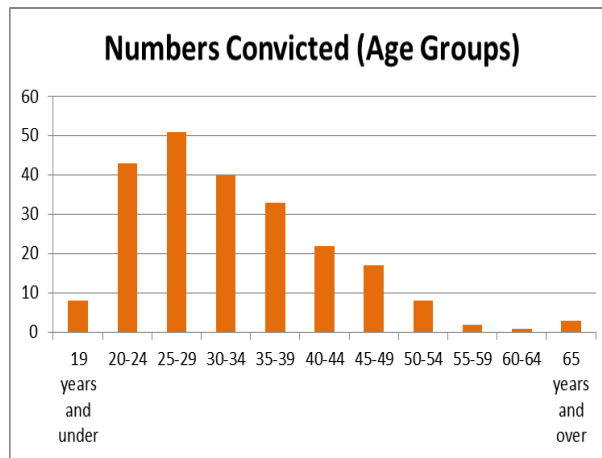
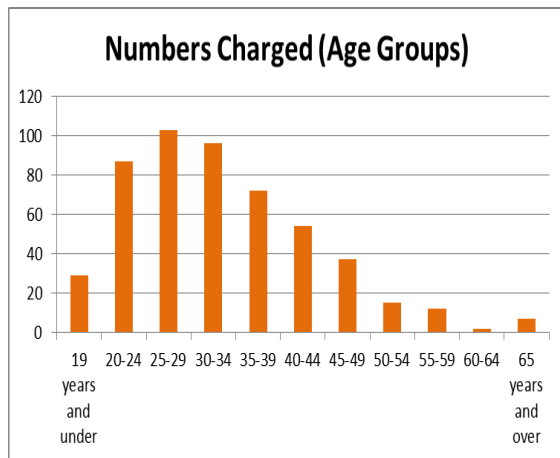
Data to 31 December 2019 drawn from Department for Courts www.justice.govt.nz/justice-sector-policy/research-data/justice-statistics/data-tables/#services

National Offence Data: Age Group

Assault on Person In Family Relationship



Strangulation



Data to 30 June 2019 drawn from Department for Courts www.justice.govt.nz/justice-sector-policy/research-data/justice-statistics/data-tables/#services

Department for Courts Statistics

Please find the link to the spreadsheet on our website here (<https://www.justice.govt.nz/justice-sector-policy/research-data/justice-statistics/data-tables/#services>), and it is under “Family Violence Offences” table.

Within that spreadsheet, please:

Refer to table 1 for the number and percentage of charges for family violence offences, by charge outcome, 2009/2010 - 2018/2019;

Refer to table 2a for the number and percentage of people charged with family violence offences, by charge outcome, 2009/2010 - 2018/2019;

Refer to table 2e for the number of people charged with any of the six family violence offences, by court and charge outcome, 2009/2010 - 2018/2019;

Refer to table 4a for the number and percentage of people charged with family violence offences, by gender, 2009/2010 - 2018/2019; and

Refer to table 5a number and percentage of people convicted of family violence offences, by gender, 2009/2010 - 2018/2019.